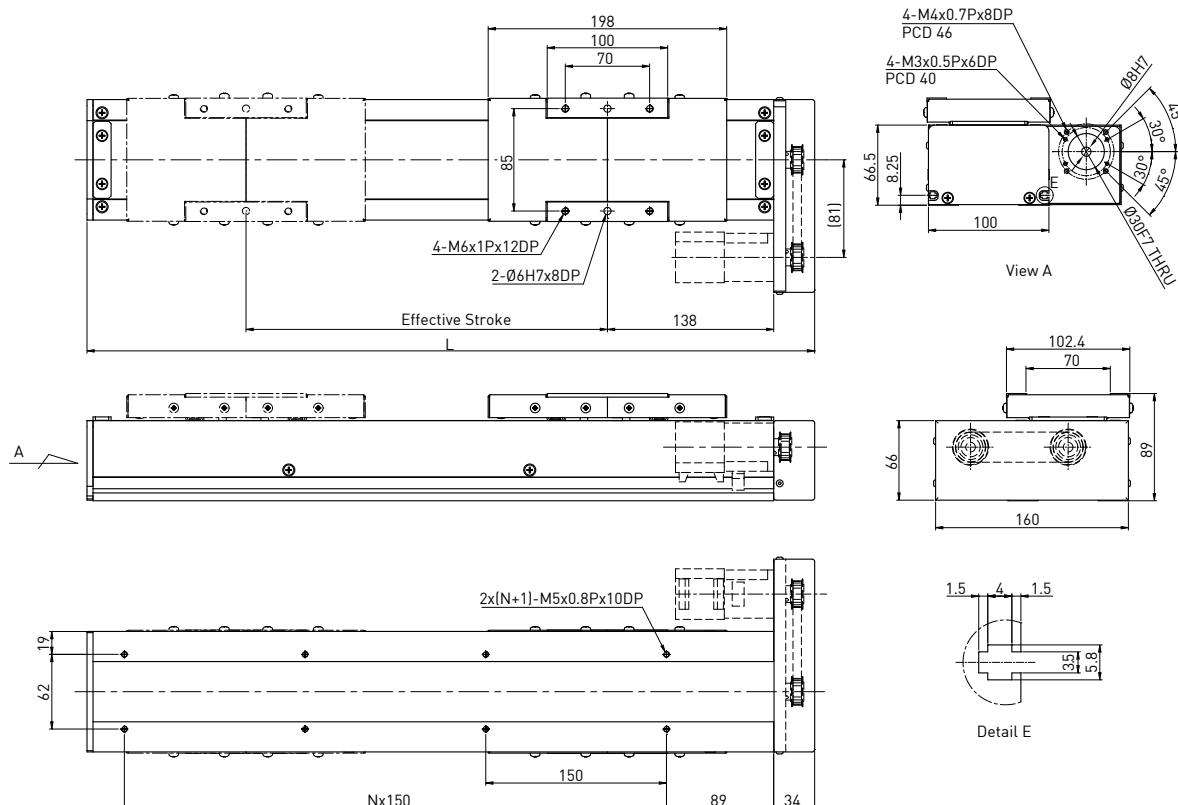


### 4.3.2 Model Number for KS100-FL

KS100	-20	P	-800	A	FL	U	S1	M	V
Model	Lead	Precision Grade	Effective Stroke	Slider Type	Motor Flange	Cover	Limit Switch	Motor	Installation
	10mm 20mm	P: Precision C: Normal		A: Standard	FL: Left	U: Without Cover None: Standard Cover	S1: OMRON SX671 None: Without Sensor	M: Supplied With Motor None: Without Motor	V: Vertical Install None: Horizontal Install



Effective stroke (mm)	L	N	Weight (kg)	AC motor output Ball screw / Drive	W	100													
200	504	2	6.0	Lead	mm	10 20													
300	604	3	6.9	Max linear speed*	mm/sec	525 1050													
400	704	3	7.8	Max RPM	RPM	3150 3150													
500	804	4	8.7	Rated thrust	N	178 89													
600	904	5	9.6	Repeatability	mm	±0.02													
700	1004	5	10.5	Effective stroke	mm	200-800													
800	1104	6	11.4	<div style="display: flex; align-items: center;"> <div style="margin-right: 10px;">Rated dynamic load**</div> <table border="1" style="margin-left: 10px;"> <tr><td>Fyd</td><td>N</td><td>175</td></tr> <tr><td>Fzd</td><td>N</td><td>778</td></tr> <tr><td>Mxd</td><td>N-m</td><td>16.8</td></tr> <tr><td>Myd</td><td>N-m</td><td>6.9</td></tr> <tr><td>Mzd</td><td>N-m</td><td>6.9</td></tr> </table> </div>	Fyd	N	175	Fzd	N	778	Mxd	N-m	16.8	Myd	N-m	6.9	Mzd	N-m	6.9
Fyd	N	175																	
Fzd	N	778																	
Mxd	N-m	16.8																	
Myd	N-m	6.9																	
Mzd	N-m	6.9																	
Permitted load condition***				$\frac{F_y}{F_{yd}} + \frac{F_z}{F_{zd}} + \frac{M_x}{M_{xd}} + \frac{M_y}{M_{yd}} + \frac{M_z}{M_{zd}} \leq 1$ <p>Fy, Fz, Mx, My, Mz are working loads</p>															

\* Vibration might occur when the effective stroke is longer than 700mm.  
The maximum speed should be decreased by 15% for every 100mm of increased stroke.  
\*\* The load condition is based on 10,000km operation.  
\*\*\* If used on the vertical axis or in a special condition, please contact HIWIN.